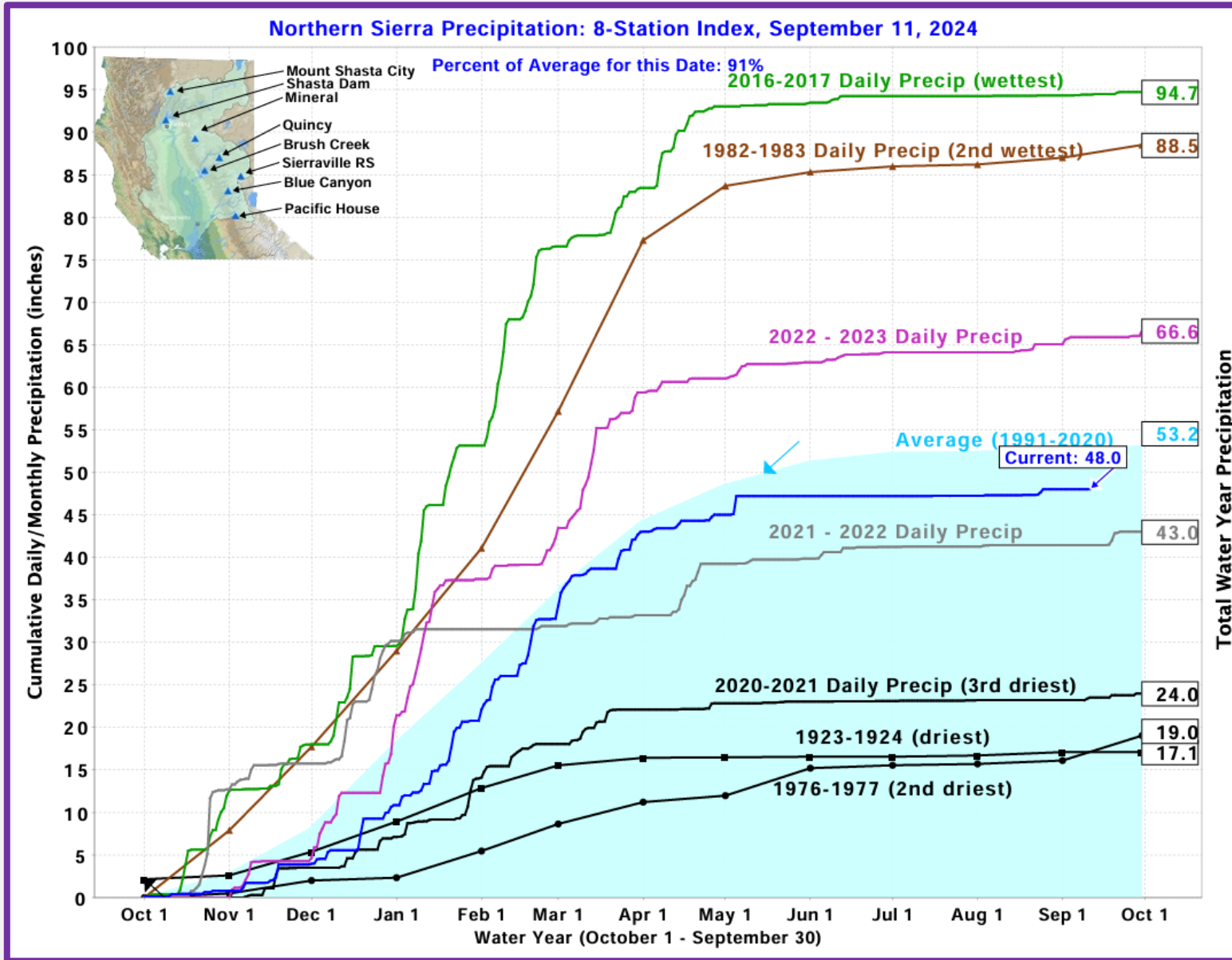


Water Conditions Report

Board of Directors Meeting
September 16, 2024



Northern Sierra Precipitation: 8-Station Index, September 11, 2024

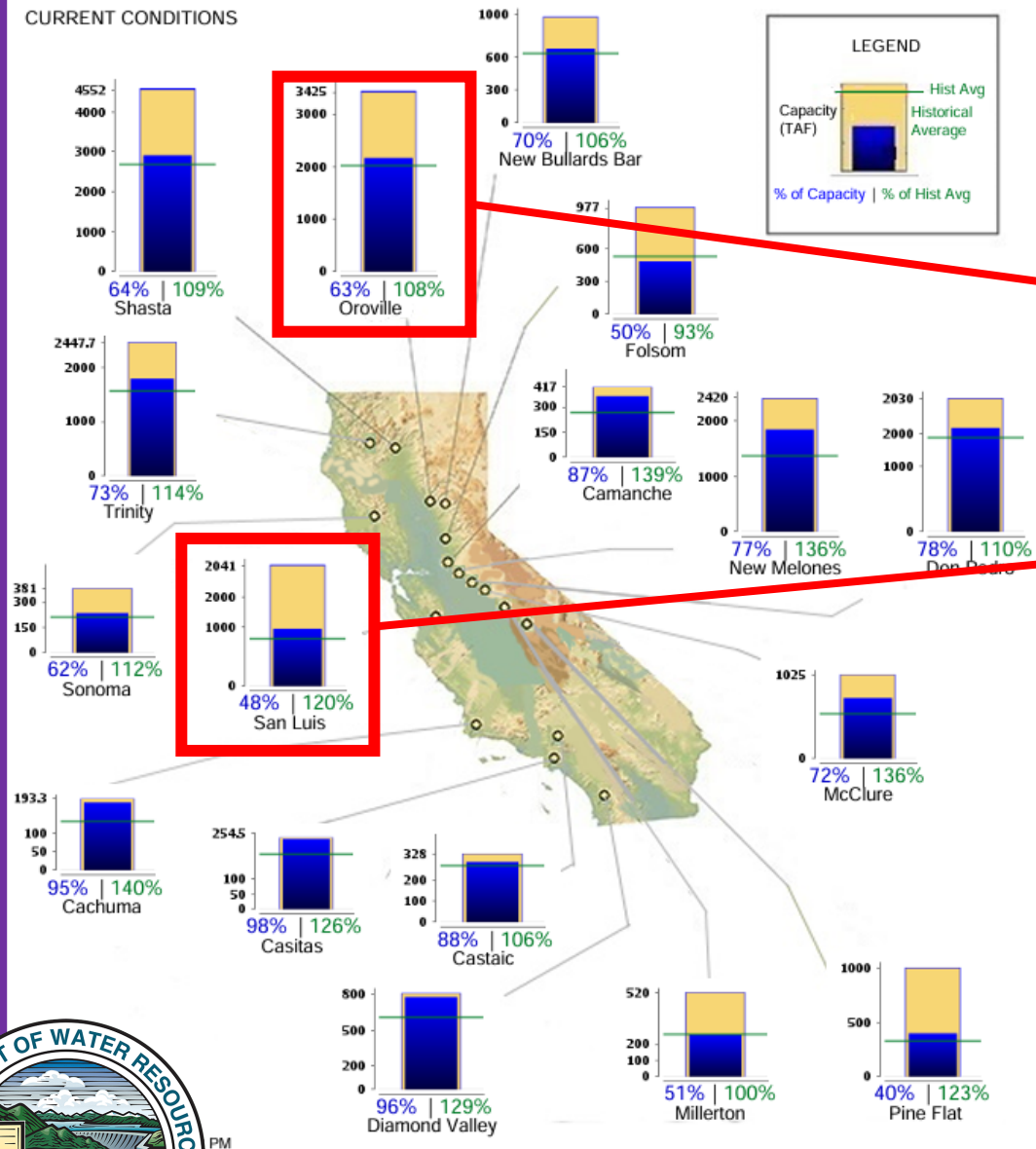


State Precipitation Stations – North Sierra

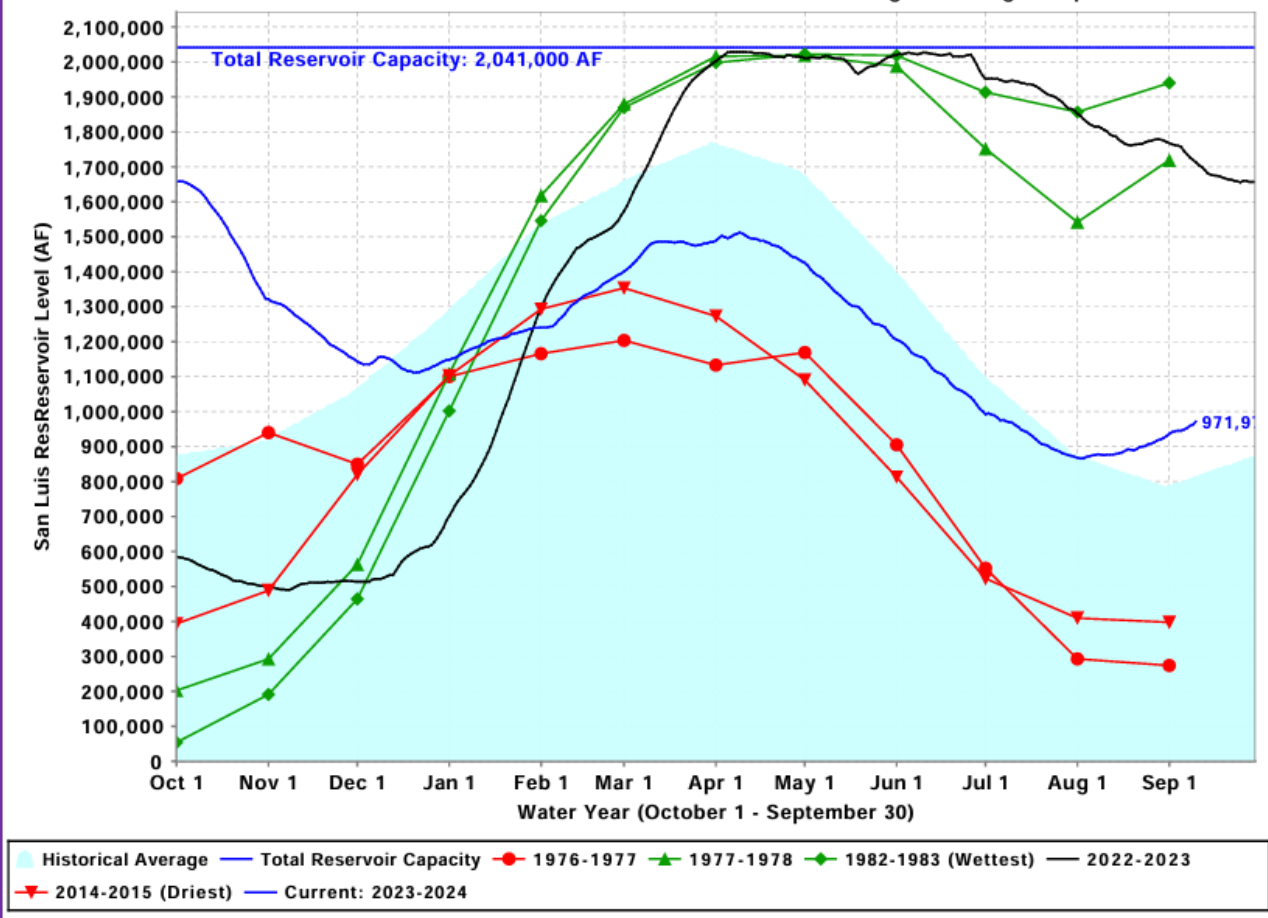
CALIFORNIA MAJOR WATER SUPPLY RESERVOIRS

Midnight - September 10, 2024

CURRENT CONDITIONS



San Luis Res Levels: Various Past Water Years and Current Water Year, Ending At Midnight September 10, 2024



Current Reservoir Conditions

SGPWA Portfolio @ 40%	
Source	TOTAL (AF)
SWP – Carryover SGPWA	8,650
SWP – Carryover Ventura	4,178
SWP – Table A	6,920
SWP – Ventura	4,000
Non-SWP - Nickel Water	1,700
Subtotal Supply	25,448
Westside Transfer	(6,000)
Total Supply	19,448



2024 SWP Allocation & Portfolio Update

Water Orders 2024

Total Current Water Orders: 21,950AF



BCVWD

- 18,200 AF
 - 11,200 AF (*Demands*) ✓
 - 7,000 AF (*Banking*) ✓



YVWD

- 2,250 AF
 - 250 AF (*Direct Demand*) ✓
 - 2,000 AF (*Recharge Demand*) ✓



City of Banning

- 1,500 AF
 - 1,250 AF (*Demands*) ✓
 - 250 AF (*Banking*) ✓



SGPWA

- TBD (Future Supply)



Water Orders 2025

Total Future Water Orders: 18,150 AF



BCVWD

- 16,200 AF
 - 11,200 AF (*Demands*)
 - 5,000 AF (*Banking*)



YVWD

- 200 AF
 - 200 AF (*Direct Demand*)



City of Banning

- 1,750 AF
 - 1,500 AF (*Demands*)
 - 250 AF (*Banking*)

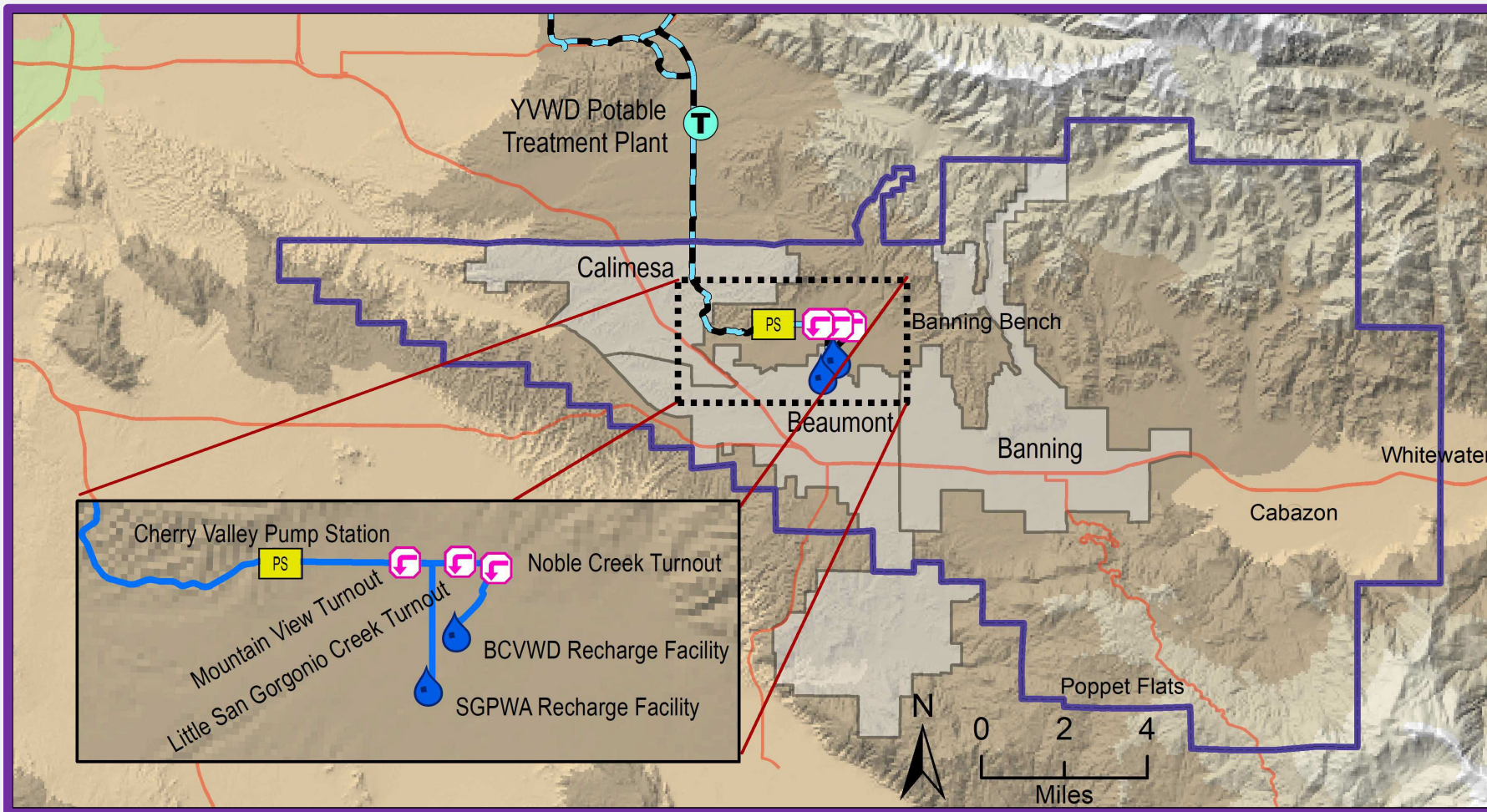


SGPWA

- TBD (Future Supply)



Water Orders 2024 & 2025



	Jan	Feb	Mar	Apr	May	Jun	Jul	Aug	Sept	Oct	Nov	Dec	Total
Recharge	717	906	2,030	1,840	1,389	1,304	1,361	1,896	1,700				13,143
Direct	13	6	0	0	0	0	0	0	0				19

*Estimated
*From Local Storage



Local Deliveries 2024 (acre-feet)

Subject to Final Verification





*****Note: These photos are for reference only and will be updated prior to the Board meeting.*****

Brookside East Recharge Facility

BCVWD Recharge Facilities



September Recharge Activities